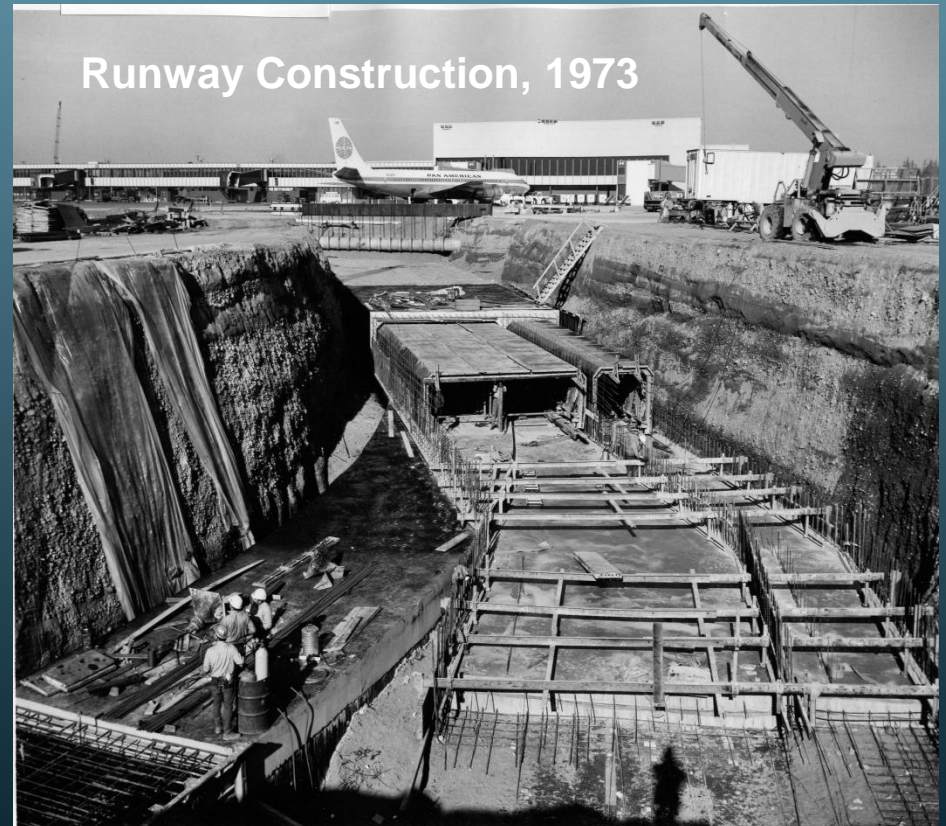


# Labor Unions at the Port of Seattle

*A long and  
productive  
history!*



# Labor Unions at the Port of Seattle

- Roughly 50% of employees at the Port are unionized, represented by sixteen labor unions.
- Job classifications with highest union representation:
  - Maintenance, (airport maintenance is 85% union, seaport maintenance is between 70% and 80% union), and
  - Police personnel approximately 95% union.



# Labor Unions at the Port of Seattle

- Among the largest unions in the Port's workforce are:
- The International Brotherhood of Teamsters (IBT) - 180 members representing police services, parking revenue collectors and drivers.
- The International Longshoremen Workers Union (ILWU) - 137 members representing airport operations and security staff.
- The International Brotherhood of Electrical Workers (IBEW) - 122 members representing wiremen, utility workers, and electronic technicians.



# Labor Unions at the Port of Seattle

- There are some 850 ILWU members working the seaport, many of them employed by Port customers rather than by the Port of Seattle itself.



# Labor Unions at the Port of Seattle

- Port's tenants and customers have unionized workforces at the Seaport and the Airport
- The Aviation Division - 7,500 union jobs, primarily airline, concession and construction employees
- Seaport Division - 3,600 union jobs primarily transportation jobs, such as dock workers, rail workers and shipyards



# Labor Unions at the Port of Seattle

- **Port of Seattle manages 10 projects directly employing 2,500 unionized construction workers under a Project Labor Agreement (PLA). Former and current projects include:**
  - **Consolidated Rental Car Facility**
  - **Runway 16L Reconstruction**
  - **Third Runway**
  - **T-91 Cruise Ship terminal**



# Labor Unions at the Port of Seattle

- Recently negotiated raises for unionized Port of Seattle employees in 2009 range between 2.0 – 6.0%, with an overall average of just under 5.0%.
- 9 labor agreements executed since January 2009, three more agreements are pending.
- When CEO reduced Port spending in 2009, instituting furloughs for salaried employees, unions agreed to similar cutbacks including furloughs, wage givebacks or layoffs to help the Port meet the 2009 the new budget goals.

Helmets to Hardhats

